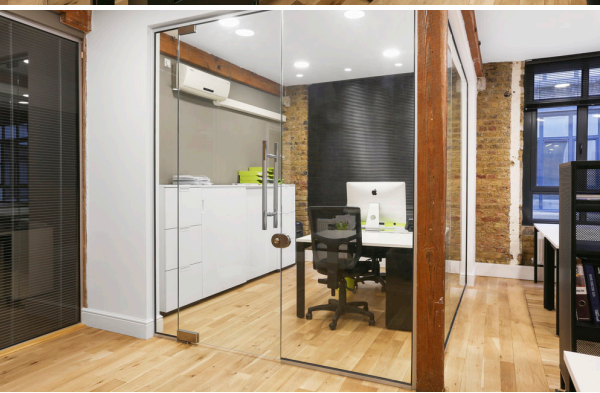




Prime Location
-
Flexible Lease Terms

19A PHIPP STREET

Old Street, Shoreditch, EC2A 4NP



LEASE TERM

Available by way of new lease directly from the Landlord.

DESCRIPTION

This media style office suite is located in this former Victorian warehouse building situated in the heart of Shoreditch. The suite is entirely open plan with a private office/meeting room and a fully fitted kitchen. There are also demised wc's and a shower facility.

AMENITIES

- Fibre
- Plug & Play
- Fully fitted
- Exposed Bick
- Exposed Wooden Beams
- Air conditioning
- Demised toilets
- Newly refurbished
- Central heating
- Perimeter trunking
- Wooden flooring
- Fully fitted kitchen
- Shower
- Passenger lift
- Entry phone system
- 24 hour access
- EPC - Upon request

AVAILABILITY

FLOOR:	AREA (SQ FT)	RENT (PER SQ FT)	BUSINESS RATES (PER SQ FT)	SERVICE CHARGE (PER SQ FT)	TOTAL COST (PER ANNUM)	STATUS
1st	1,237	£45.00	£10.70	£0.00	£68,900	Available



CONTACT

Cecile Drugeon

020 3319 5813

cd@theworkplacecompany.co.uk

Harry James

07597 415 549

hj@theworkplacecompany.co.uk



2nd Floor, 112 Clerkenwell Road, London, EC1M 5SA

Misrepresentation Act 1967: These particulars are believed to be correct but their accuracy is not guaranteed and they do not form part of any contract. Unless otherwise stated, all prices and rents are quoted exclusive of VAT