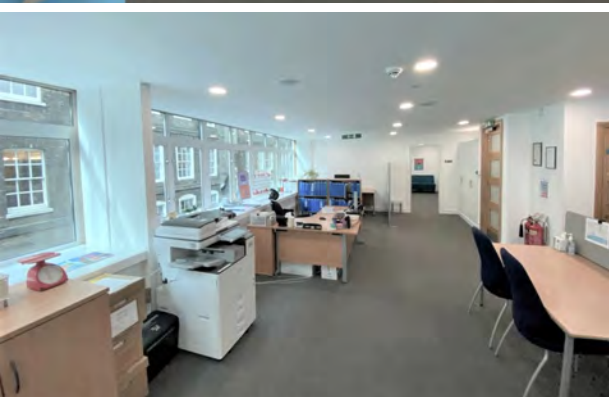




# HARMSWORTH HOUSE

Harmsworth House, 13-15 Bouverie Street, London, EC4Y 8DP





## LEASE TERM

Available by sublease or assignment until October 2025 with a mutual break in December 2022.

## DESCRIPTION

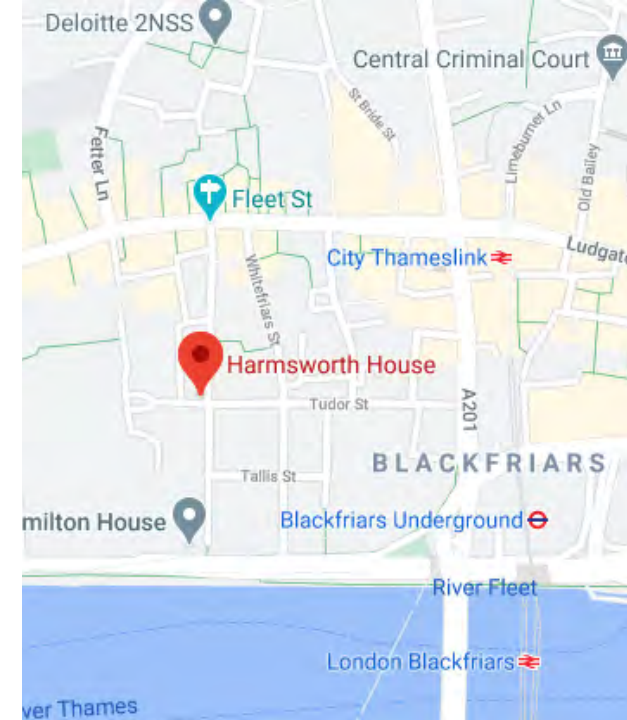
Harmsworth House offers 1,324 sq. ft. of recently refurbished office space available fully fitted. The building benefits from a manned reception area, showers and an onsite gym. Harmsworth House is an attractive 20th century building. The first floor unit has south facing windows allowing maximum natural light.

## AMENITIES

- Manned reception
- Air Conditioning
- Passenger Lift
- Fitted Kitchenette
- Raised Floors
- LED Lighting
- Good Natural Light
- Newly Refurbished
- Furniture Available
- Entry Phone System
- Showers
- Large onsite gym
- Lockers
- Parking (separate arrangement)
- Meeting Room
- 24 hour access
- Onsite security
- EPC - TBC

## AVAILABILITY

FLOOR:	AREA (SQ FT)	RENT (PER SQ FT)	BUSINESS RATES (PER SQ FT)	SERVICE CHARGE (PER SQ FT)	TOTAL COST (PER ANNUM)	STATUS
1st	1324	£45	£16.56	Incl.	£81,505	Available



## CONTACT

Harry James

07597415549

[hj@theworkplacecompany.co.uk](mailto:hj@theworkplacecompany.co.uk)

Robin Thomas

0203 597 6471

[rt@theworkplacecompany.co.uk](mailto:rt@theworkplacecompany.co.uk)



2nd Floor, 112 Clerkenwell Road, London, EC1M 5SA

Misrepresentation Act 1967: These particulars are believed to be correct but their accuracy is not guaranteed and they do not form part of any contract. Unless otherwise stated, all prices and rents are quoted exclusive of VAT