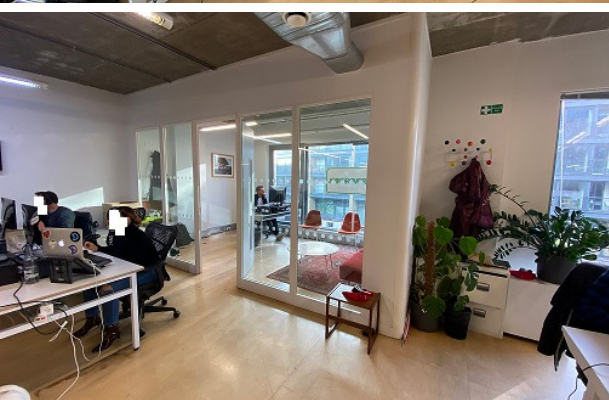
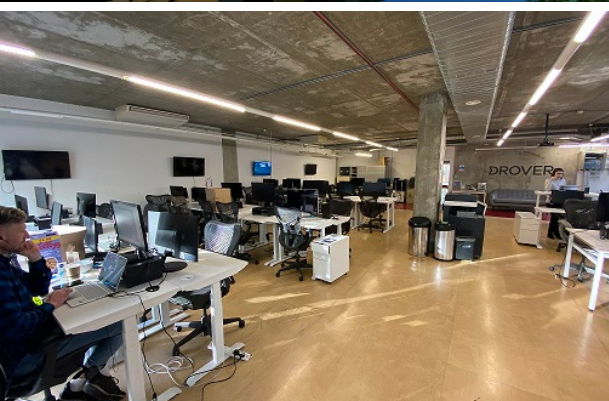




8 ORSMAN ROAD

London, N1 5QJ

THE WORKPLACE CO. 



LEASE TERM

Available by way of a new lease directly from the Landlord.

DESCRIPTION

Three units available in this bright, open plan office space. The industrial style space with an exposed concrete finish boasts 3 meter high ceilings as well as a full-height windows over looking Regents Canal. It is ideally located in close proximity to transport links such as direct bus links to Shoreditch, The City and Liverpool Street.

AMENITIES

- Air Conditioning
- Exposed Concrete Finish
- Board Room
- Meeting Room
- Lift Access
- Parking
- Bike Storage
- Excellent Natural Light
- Kitchenette
- Secure Entry Phone System
- 24 hr Access
- Canal Views
- On-site Restaurant
- Open Plan

AVAILABILITY

FLOOR:	AREA (SQ FT)	RENT (PER SQ FT)	BUSINESS RATES (PER SQ FT)	SERVICE CHARGE (PER SQ FT)	TOTAL COST (PER ANNUM)	STATUS
1st	3547	£32.50	£9.31	£9	£180,223	Available
3rd - Unit 7	759	£32.50	£7.96	£9	£37,540	Under Offer
3rd - Unit 8	862	£32.50	£9.26	£9	£43,755	Available



CONTACT

Rupert Madden

0203 597 6478

rm@theworkplacecompany.co.uk

Harry James

020 7993 8075

hj@theworkplacecompany.co.uk



2nd Floor, 112 Clerkenwell Road, London, EC1M 5S

Misrepresentation Act 1967: These particulars are believed to be correct but their accuracy is not guaranteed and they do not form part of any contract. Unless otherwise stated, all prices and rents are quoted exclusive of VAT